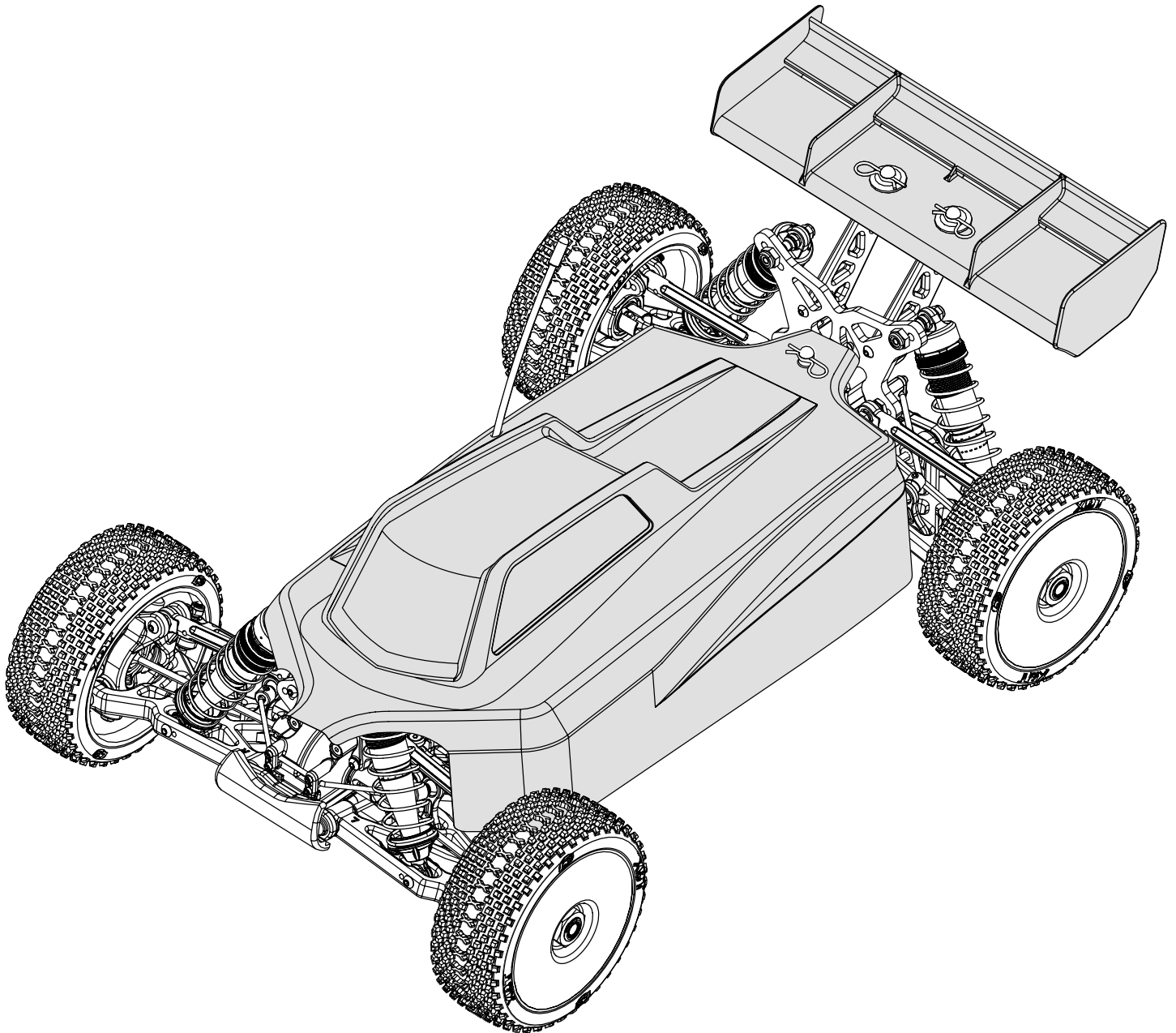


**RTR**  
READY-TO-RUN

# EIGHT-E™

1/8-SCALE HIGH-PERFORMANCE 4WD ELECTRIC BUGGY



INSTRUCTION MANUAL  
BEDIENUNGSANLEITUNG  
MANUEL D'UTILISATION  
MANUALE DI ISTRUZIONI



Before operating this vehicle, please read all printed materials thoroughly.  
Horizon Hobby is not responsible for inadvertent errors in this manual.

# REPLACEMENT PARTS | ERSATZTEILE | PIÈCES DE RECHANGE | PEZZI DI RICAMBIO

| Part #    | English                                     | Deutsch   | Français   | Italiano  |
|-----------|---|---|--|---|
| DYN4955   | 130A WP Dynamite ESC                        | Fuze 130A bürstenloser, wasserdichte Geschwindigkeitsregler | Contrôleur étanche Brushless Fuze 130A                       | ESC Fuze waterproof brushless 130 A                         |
| DYNS1805  | Fuze 1/8 BL Motor: 2500Kv                   | Fuze bürstenloser Motor im Maßstab 1:8: 2500 kv             | Moteur BL Fuze 1/8, 2500Kv                                   | Motore Fuze brushless 1/8: 2500 Kv                          |
| LOS240009 | Body, Cf, Painted: 8IGHT-E RTR              | Karosserie, CF, lackiert: 8IGHT-E RTR                       | 8IGHT-E RTR - Carrosserie Cab forward peinte                 | Carrozzeria, cab forward, verniciata: 8IGHT-E RTR           |
| LOS242013 | Fr 47T Gear, 12 TPIn: 8/8T RTR              | 47T Frontgetriebe, 12T-Stift: 8/8T RTR                      | 8/8T RTR - Différentiel avant 47T et pignon 12T              | Corona anteriore 47 denti, pignone 12 denti: 8/8T RTR       |
| LOS242014 | Rr 47T Gear, 12T Pin: 8/8T RTR              | 47T Heckgetriebe, 12T-Stift: 8/8T RTR                       | 8/8T RTR - Différentiel arrière 47T et pignon 12T            | Corona posteriore 47 denti, pignone 12 denti: 8/8T RTR      |
| LOS242015 | Diff Case & Hdwr: 8/8T RTR                  | Ausgleichsgehäuse und Hardware: 8/8T RTR                    | 8/8T RTR - Corps de différentiel                             | Scatola differenziale e accessori: 8/8T RTR                 |
| LOS242016 | Center Outdrives (2): 8/8T RTR              | Mittenabtriebe (2) 8/8T RTR                                 | 8/8T RTR - Noix de cardans centraux (2)                      | Trascinatori centrali (2): 8/8T RTR                         |
| LOS242017 | Fr/Rr Outdrives (2): 8/8T RTR               | Front-/Heckabtriebe (2) 8/8T RTR                            | 8/8T RTR - Noix de cardans avant/arrière (2)                 | Trascinatori ant./post. (2): 8/8T RTR                       |
| LOS243002 | 15mm Shock Body St, Fr (2): 8 RTR           | 15 mm Stoßdämpfergehäuse, Front (2): 8 RTR                  | 8IGHT RTR - Corps d'amortisseurs avant 15mm (2)              | Set corpo ammortizzatore 15 mm, anteriore (2): 8 RTR        |
| LOS243004 | 8T Fr, 8 Rr Shk Body: 8/8T RTR              | 8T Front-, 8 Heck-Stoßdämpfergehäuse: 8/8T RTR              | 8/8T RTR - Corps d'amortisseur avant 8T et arrière 8 (2)     | Corpo ammortizzatore anteriore 8T, posteriore 8: 8/8T RTR   |
| LOS243005 | Shock Caps (2): 8/8T RTR                    | Stoßdämpferkappen (2): 8/8T RTR                             | 8/8T RTR - Bouchons d'amortisseurs (2)                       | Cappucci ammortizzatore (2): 8/8T RTR                       |
| LOS244000 | Link Set: 8IGHT RTR                         | Gestängesatz: 8IGHT RTR                                     | 8IGHT RTR - Biellettes                                       | Set collegamenti: 8IGHT RTR                                 |
| LOSA1701  | Front Suspension Arm Bushings: 8B/8T        | Buchsen Arm vordere Aufhängung: 8B/8T                       | 8B/8T - Bagues de triangle av                                | Boccole braccio sospensione anteriore: 8B/8T                |
| LOSA1731  | R Hub Carriers: 8B 2.0                      | R Radträger: 8B 2.0   | 8B 2.0 - Porte moyeu arrière                                 | Portamozzi posteriori: 8B 2.0                               |
| LOSA1750  | Sway Bar Set: 8B/8T                         | Stabilisatorsatz: 8B/8T                                     | 8B/8T - Jeu de barre anti-roulis                             | Set barra antitorione: 8B/8T                                |
| LOSA3518  | Drive Pin Set: 8B/8T                        | Mitnehmerstiftsatz: 8B/8T                                   | 8B/8T - Goupilles  | Set perno guida: 8B/8T                                      |
| LOSA3522  | F/R CV Driveshaft Axles (2): 8B/8T          | Front/Heck CV-Antriebswellenachsen (2): 8B/8T               | 8B/8T - Axes de cardans av/arr CV (2)                        | Assi trasmissione CV ant./post. (2): 8B/8T                  |
| LOSA3523  | F/R CV Driveshaft Coupling Set: 8B/8T       | Front/Heck CV-Antriebswellenkupplungssatz: 8B/8T            | 8B/8T - Coupleurs de cardans av/arr CV                       | Set accoppiatore trasmissione CV ant./post.: 8B/8T          |
| LOSA3530  | Wheel Hexes (Pr) Hard Ano: 8B/8T            | Radsechskante (Pr) Hardware Ano: 8B/8T                      | 8B/8T - Hexagone de Jantes (Pr) anodisé dur                  | Esagoni ruote (Pr) anodizzati: 8B/8T                        |
| LOSA3531  | Wheel Nuts & Pins (4): 8B, 8T               | Radmuttern und Stifte (4): 8B/8T                            | 8B/8T - Ecrous de jantes & goupilles (4)                     | Dadi e perni ruote (4): 8B/8T                               |
| LOSA3535  | F/R CV Drive Shafts (2): 8B 2.0             | Front/Heck CV-Antriebswellen (2): 8B 2.0                    | 8B 2.0 - Arbres av/arr. CV (2)                               | Alberi trasmissione CV ant./post. (2): 8B 2.0               |
| LOSA3577  | 1.0 Module Pitch Pinion, 17T: 8E, SCTE      | 1.0 Modul Zahnritzel, 17T: 8E, SCTE                         | 8E, SCTE - Pignon module 1.0, 17T                            | Pignone a passo modulare 1.0, 17 denti: 8E, SCTE            |
| LOSA4002  | Antenna Kit                                 | Antennensatz  | Kit antenne  | Kit antenna   |
| LOSA4003  | Antenna Caps                                | Antennenkappen  | Embouts d'antenne  | Cappucci antenna  |
| LOSA4406  | Steering Bell Crank Plstc & Servo Svr 2.0   | Steuer-Umlenkhebel Kunststoff und Servo Svr. 2.0            | Palonnier de direction, plastiques & sauve servo: 2.0        | Squadretta sterzo plastica e salvaservo 2.0                 |
| LOSA4408  | Steering Post Set: 8B/8T                    | Lenksäulensatz: 8B/8T                                       | 8B/8T - Pivot de direction                                   | Set comandi sterzo: 8B/8T                                   |
| LOSA4420  | Center Diff Mnt & Brace Set: 8B 2.0         | Mitteldifferentials-Halterung und Stützsatz: 8B 2.0         | 8B 2.0 - Support de diff cent. & entretoises                 | Set supporto e montante differenziale centrale: 8B 2.0      |
| LOSA4424  | Body Posts & Tank Mounts: 8B/8T             | Karosserieträger und Motorhalterungen: 8B/8T                | 8B/8T - Plots de carrosseries & support de réservoir         | Supporti carrozzeria e serbatoio: 8B/8T                     |
| LOSA4431  | Hinge Pin Brace Cover Set: 8B/8T            | Scharnierbolzen Stützabdeckungssatz: 8B/8T                  | 8B/8T - Support d'axes                                       | Set protezioni piastrine: 8B/8T                             |
| LOSA4435  | Wing Mount Set: 8B/8T                       | Flügelhalterungssatz: 8B/8T                                 | 8B/8T - Support d'aileron                                    | Set supporto alettone: 8B/8T                                |
| LOSA4453  | Chassis Spacer/Cap Set: 8B 2.0              | Karosserie Distanzstück/Kappen-Satz: 8B 2.0                 | 8B 2.0 - Châssis entretoise/bouchon                          | Set distanziali/cappucci telaio: 8B 2.0                     |
| LOSA4454  | R Gearbox Bearing Inserts, Alum             | Heckgetriebe Lagereinsätze, Aluminium                       | Bague de roulement de diff arr., alu                         | Inserti cuscinetti posteriori scatola del cambio, alluminio |
| LOSA5411  | 15 mm Shock Shaft 4 x 50 mm, TiN (1): 8B/8T | 15 mm Stoßdämpferwelle 4 x 50 mm, TiN (1): 8B/8T            | 8B/8T - Tige d'amortisseur 15 mm 4 x 50 mm, Tri-nitride. (1) | Albero ammortizzatore 15 mm 4 x 50 mm, TiN (1): 8B/8T       |
| LOSA5413  | 15 mm Shock Shaft 4 x 57 mm, TiN (1): 8B/8T | 15 mm Stoßdämpferwelle 4 x 57 mm, TiN (1): 8B/8T            | 8B/8T - Tige d'amortisseur 15 mm 4 x 57 mm, Tri-nitride. (1) | Albero ammortizzatore 15 mm 4 x 57 mm, TiN (1): 8B/8T       |
| LOSA5429  | Shock O-ring Set: 8B/8T                     | Stoßdämpfer O-Ring-Satz: 8B/8T                              | 8B/8T - Joints toriques amortisseurs                         | Set o-ring ammortizzatori: 8B/8T                            |
| LOSA5430  | 15mm Shock Bladders: 8B/8T                  | 15 mm Stoßdämpfersäcke: 8B/8T                               | 8B/8T - Coupelles de volume constant d'amortisseur 15mm      | Membrane ammortizzatore 15 mm: 8B/8T                        |
| LOSA5435  | 15mm Shock Ends,Cups,Bushing: 8B 2.0        | 15 mm Stoßdämpferenden, Dichtung, Buchsen: 8B 2.0           | 8B 2.0 - Rotules, coupelles, bagues d'amortisseurs 15mm      | Boccole, coppe, terminali ammortizzatore 15 mm: 8B 2.0      |

# REPLACEMENT PARTS | ERSATZTEILE | PIÈCES DE RECHANGE | PEZZI DI RICAMBIO

| Part #    | English                                | Deutsch  | Français                                      | Italiano  |
|-----------|--|--|---|---|
| LOSA5440  | 15 mm Shock Piston/Guide Set: 8B/8T    | 15 mm Stoßdämpferkolben/Führungssatz: 8B/8T      | 8B/8T - Piston/Guide d'amortisseurs 15 mm     | Set guida/pistone ammortizzatori 15 mm: 8B/8T                 |
| LOSA5451  | 15 mm Springs 2.3" x 4.4 Rate, Silver  | 15 mm Federn 2,3" x 4,4 Verhältnis, Silber       | 15 mm Ressorts 2.3 x Dureté 4.4, argentés     | Molle 15 mm, rigidezza 2,3" x 4,4, argento                    |
| LOSA5458  | 15 mm Springs 3.1" x 3.1 Rate, Green   | 15 mm Federn 3,1" x 3,1 Verhältnis, Grün         | 15 mm Ressorts 3.1" x Dureté 3.1 verts        | Molle 15 mm, rigidezza 3,1" x 3,1, verde                      |
| LOSA6045  | HD Steering Link Set: 8B 2.0           | HD-Lenkgestängesatz: 8B 2.0                      | 8B 2.0 - Tringlerie de dir. renf.             | Set collegamenti sterzo HD: 8B 2.0                            |
| LOSA6048  | Susp. Balls 8.8 mm Flanged: 8B/8T      | Federkugeln, 8,8 mm geflanscht: 8B/8T            | 8B/8T - Billes de susp. 8,8mm flasqué         | Sfere sospensioni 8,8 mm, flangiate: 8B/8T                    |
| LOSA6050  | Steering Ball Set 6.8 mm: 8B/8T        | Kugelumlaufsatz 6,8 mm: 8B/8T                    | 8B/8T - Billes de direction 6.8mm             | Set sfere sterzo 6,8 mm: 8B/8T                                |
| LOSA6056  | Suspension Balls 6.8 mm: 8B 2.0        | Federkugeln 6,8 mm: 8B 2.0                       | 8B 2.0 - Billes de susp. 6.8mm                | Sfere sospensioni 6,8 mm: 8B 2.0                              |
| LOSA6221  | 4-40 x 5/8" Cap Screws                 | 4-40 x 5/8" Kopfschrauben                        | Vis CHC 4-40 x 5/8"                           | Viti a testa cilindrica con esagono incassato 4-40 x 5/8"     |
| LOSA6227  | Hardened Setscrews, 4-40               | Gehärtete Feststellschrauben, 4-40               | Vis durcies, 4-40                             | Grani induriti, 4-40  |
| LOSA6240  | 5-40 x 1/2" Caphead Screw (8)          | 5-40 x 1/2" Kopfschrauben (8)                    | Vis CHC 5-40 x 1/2" (8)                       | Vite a testa cilindrica con esagono incassato 5-40 x 1/2" (8) |
| LOSA6241  | 5-40 x 5/8" Caphead Screw (8)          | 5-40 x 5/8" Kopfschrauben (8)                    | Vis CHC 5-40 x 5/8" (8)                       | Vite a testa cilindrica con esagono incassato 5-40 x 5/8" (8) |
| LOSA6251  | 5-40 x 3/16" Set Screw (10)            | 5-40 x 3/16" Feststellschrauben (10)             | Vis 5-40 x 3/16" (10)                         | Grano 5-40 x 3/16" (10)                                       |
| LOSA6255  | 2.56 x 1/4" Button Head Screw (10)     | 2,56 x 1/4" Halbrundschraben (10)                | Vis à tête bombée 2,56 x 1/4" (10)            | Vite a testa tonda 2,56 x 1/4" (10)                           |
| LOSA6256  | 4-40 x 1/2" Button Head Cap Screw (6)  | 4-40 x 1/2" Halbrundschraben (6)                 | Vis à tête bombée 4-40 x 1/2" (6)             | Vite a testa tonda 4-40 x 1/2" (6)                            |
| LOSA6262  | 8-32 x 1/2" FH Screws (10)             | 8-32 x 1/2" Flachkopfschrauben (10)              | Vis FH 8-32 x 1/2" (10)                       | Viti a testa piatta 8-32 x 1/2" (10)                          |
| LOSA6263  | 8-32 x 3/4" BH Screws (8)              | 8-32 x 3/4" Halbrundschraben (8)                 | Vis BH 8-32 x 3/4" (8)                        | Viti a testa tonda 8-32 x 3/4" (8)                            |
| LOSA6266  | 8-32 x 5/8" BH Screws                  | 8-32 x 5/8" Halbrundschraben                     | Vis BH 8-32 x 5/8"                            | Viti a testa tonda 8-32 x 5/8"                                |
| LOSA6270  | 5-40 x 3/8" Flat Head Screws (10)      | 5-40 x 3/8" Flachkopfschrauben (10)              | Vis à tête fraisée 5-40 x 3/8" (10)           | Viti a testa piatta 5-40 x 3/8" (10)                          |
| LOSA6271  | 5-40 x 1/2" FH Screws (10)             | 5-40 x 1/2" Flachkopfschrauben (10)              | Vis FH 5-40 x 1/2" (10)                       | Viti a testa piatta 5-40 x 1/2" (10)                          |
| LOSA6272  | 5-40 x 3/4" FH Screws (10)             | 5-40 x 3/4" Flachkopfschrauben (10)              | Vis FH 5-40 x 3/4" (10)                       | Viti a testa piatta 5-40 x 3/4" (10)                          |
| LOSA6273  | 5-40 x 7/8" FH Screws (4)              | 5-40 x 7/8" Flachkopfschrauben (4)               | Vis FH 5-40 x 7/8" (4)                        | Viti a testa piatta 5-40 x 7/8" (4)                           |
| LOSA6274  | 5-40 x 1 7/8" FH Screws (2)            | 5-40 x 1 7/8" Flachkopfschrauben (2)             | Vis FH 5-40 x 1 7/8" (2)                      | Viti a testa piatta 5-40 x 1 7/8" (2)                         |
| LOSA6278  | 5-40 x 1/2" BH Screws (8)              | 5-40 x 1/2" Halbrundschraben (8)                 | Vis BH 5-40 x 1/2" (8)                        | Viti a testa tonda 5-40 x 1/2" (8)                            |
| LOSA6279  | 5-40 x 3/4" BH Screws (8)              | 5-40 x 3/4" Halbrundschraben (8)                 | Vis BH 5-40 x 3/4" (8)                        | Viti a testa tonda 5-40 x 3/4" (8)                            |
| LOSA6280  | 5-40 x 1" BH Screws (4)                | 5-40 x 1" Halbrundschraben (4)                   | Vis BH 5-40 x 1" (4)                          | Viti a testa tonda 5-40 x 1" (4)                              |
| LOSA6281  | 5-40 x 20 mm Button Head Screws (10)   | 5-40 x 20 mm Halbrundschraben (10)               | Vis à tête bombée 5-40 x 20 mm (10)           | Viti a testa tonda 5-40 x 20 mm (10)                          |
| LOSA6282  | 5-40 x 7/8" BH Screws                  | 5-40 x 7/8" Halbrundschraben                     | Vis BH 5-40 x 7/8"                            | Viti a testa tonda 5-40 x 7/8"                                |
| LOSA6284  | 5-40 x 20 mm BHS, Left Hand Thread, 8B | 5-40 x 20 mm Halbrundschraben, Linksgewinde, 8B  | 8B - Vis CHC pas inverse 5-40 x 20 mm         | Viti a testa tonda 5-40 x 20 mm, filettatura sinistrorsa, 8B  |
| LOSA6286  | 5-40 x 5/8 BH Screws (8)               | 5-40 x 5/8 Halbrundschraben (8)                  | Vis BH 5-40 x 5/8 (8)                         | Viti a testa tonda 5-40 x 5/8 (8)                             |
| LOSA6296  | 8-32 x 1/8 Flat Point Setscrew-8       | 8-32 x 1/8 Flachkopfschrauben -8                 | 8 - Vis pointeau bout plat 8-32 x 1/8         | Grano con punta piana 8-32 x 1/8, 8                           |
| LOSA6297  | 5-40 x 1/8 Flat Point Setscrew-8       | 5-40 x 1/8 Flachkopfschrauben -8                 | 8 - Vis pointeau bout plat 5-40 x 1/8         | Grano con punta piana 5-40 x 1/8, 8                           |
| LOSA6302  | 5-40 Locking Nuts, Steel               | 5-40 Kontermuttern, Stahl                        | Écrou acier 5-40                              | Dadi autobloccanti 5-40, acciaio                              |
| LOSA6306  | 4-40 Aluminum Mini-Nuts (10)           | 4-40 Aluminium Mini-Muttern (10)                 | Mini écrou alu 4-40 (10)                      | Dadi mini, alluminio 4-40 (10)                                |
| LOSA6311  | 8-32 Steel Lock Nuts (10)              | 8-32 Stahl Kontermuttern (10)                    | Écrou acier 8-32 (10)                         | Dadi autobloccanti 8-32, acciaio (10)                         |
| LOSA6350  | #4 and 1/8" Hardened Washers           | Nr. 4 und 1/8" gehärtete Unterlegscheiben        | Rondelles durcies #4 et 1/8"                  | Rondelle indurite n. 4 e 1/8"                                 |
| LOSA6945  | 8 x 14 x 4 Rubber Sealed BB (4)        | 8 x 14 x 4 mit Gummi abgedichtete Kugellager (4) | Roulements étanches caoutchouc 8 x 14 x 4 (4) | Cuscinetto a sfera sigillato in gomma 8 x 14 x 4 (4)          |
| LOSA6946  | 6 x 10 x 3 Rubber Sealed BB (4)        | 6 x 10 x 3 mit Gummi abgedichtete Kugellager (4) | Roulements étanches caoutchouc 6 x 10 x 3 (4) | Cuscinetto a sfera sigillato in gomma 6 x 10 x 3 (4)          |
| LOSA6947  | 5 x 11 x 4 Rubber Sealed BB (4)        | 5 x 11 x 4 mit Gummi abgedichtete Kugellager (4) | Roulements étanches caoutchouc 5 x 11 x 4 (4) | Cuscinetto a sfera sigillato in gomma 5 x 11 x 4 (4)          |
| LOSA6953  | 1/2 x 3/4 Rubber Sealed BB             | 1/2 x 3/4 mit Gummi abgedichtete Kugellager      | Roulements étanches caoutchouc 1/2 x 3/4      | Cuscinetto a sfera sigillato in gomma 1/2 x 3/4               |
| LOSA8131  | 8IGHT Wing, White: 8B, 8T              | 8IGHT Flügel, weiß: 8B, 8T                       | 8B, 8T - Aileron 8IGHT, blanc                 | Alettone 8IGHT, bianco: 8B, 8T                                |
| LOSA99041 | Metal Sx Arm Insert, 23 Spline, JR (2) | Metall Sx Armeinsatz, 23 Spline, JR (2)          | Insert 23s JR pour bras de servo métal (2)    | Inserto squadretta servo, metallo, 23 scanalature, JR (2)     |
| LOSB2203  | Hinge Pin Brace Set: 8 RTR             | Scharnierbolzen Stützsatz: 8 RTR                 | 8 RTR - Jeu de support d'axe                  | Set piastrine: 8 RTR  |
| SPMS605   | 9KG Servo, WP, Metal, 23T              | 9KG Servo, wasserdicht, 23T                      | Servo étanche 9kg, 23T                        | Servo 9kg, waterproof, 23T                                    |



# REPLACEMENT PARTS | ERSATZTEILE | PIÈCES DE RECHANGE | PEZZI DI RICAMBIO

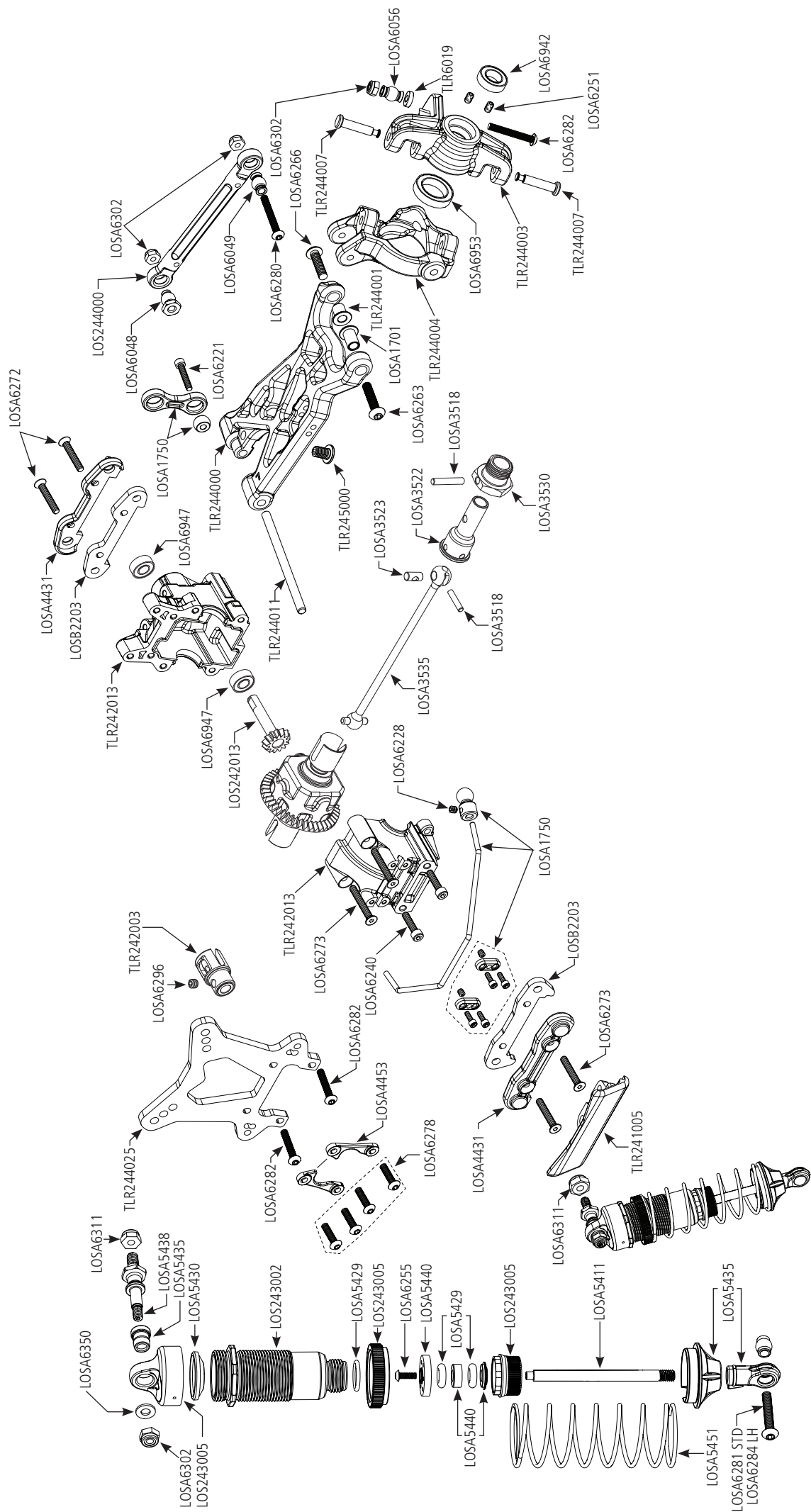
| Part #    | English                                      | Deutsch  | Français  | Italiano   |
|-----------|--|--|---|--|
| SPMSR310  | SR310 DSMR 3-Channel Receiver                | SR310 3-Kanal DSMR Oberflächenempfänger          | Récepteur SR310 3 voies DSMR                                | Ricevente di superficie SR310 DSMR 3 canali                    |
| TLR241001 | Side Guards: 8E 3.0                          | Seitenschutz: 8E 3.0                             | 8E 3.0 - Protections latérales                              | Protezioni laterali: 8E 3.0                                    |
| TLR241003 | Chassis Braces, Top Plate: 8E 3.0            | Karosseriestreben, obere Platte: 8E 3.0          | 8E 3.0 - Renforts de châssis, platine supérieure            | Montanti e coperchio superiore telaio: 8E 3.0                  |
| TLR241004 | Servo Mount, Top Brace: 8E 3.0               | Servohalterung, obere Strebe: 8E 3.0             | 8E 3.0 - Support de servo, renfort supérieur                | Supporto servo, montante superiore: 8E 3.0                     |
| TLR241005 | Front Bumper: 8E 3.0                         | Frontstoßstange: 8E 3.0                          | 8E 3.0 - Pare choc avant                                    | Paraurti anteriore: 8E 3.0                                     |
| TLR241008 | Battery Foam: 8E 3.0                         | Akku Schaumstoff: 8E 3.0                         | 8E 3.0 - Mousse de batterie                                 | Distanziale in espanso per batteria: 8E 3.0                    |
| TLR241012 | Battery Tray: 8TE 3.0                        | Akkuhalterung: 8TE 3.0                           | 8IGHT E 3.0 - Support batterie                              | Portabatteria: 8TE 3.0   |
| TLR242002 | Ctr Dogbone: 8B 3.0 (Rr), 8E 3.0 (FR)        | Mittlerer Dogbone: 8B 3.0 (Heck), 8E 3.0 (Front) | 8B 3.0 (Ar.), 8E 3.0 (av) - Cardan central                  | Cardano centrale: 8B 3.0 (post.), 8E 3.0 (ant.)                |
| TLR242003 | Coupler Outdrive: 8B 3.0                     | Kupplungsabtriebe: 8B 3.0                        | 8B 3.0 - Noix d'accouplement de cardan                      | Accoppiatore trascinatore: 8B 3.0                              |
| TLR242007 | Motor Mount 8E 3.0                           | Motorhalterung 8E 3.0                            | Support moteur 8 E 3.0                                      | Supporto motore 8E 3.0   |
| TLR242009 | Rear Center Dog Bone: 8E 3.0                 | Hinterer mittlerer Dogbone: 8E 3.0               | 8E 3.0 - Cardan central arrière                             | Cardano centrale posteriore: 8E 3.0                            |
| TLR242013 | Front & Rear Gear Box Set: All 8IGHT         | Front- und Heckgetriebekastensatz: Alle 8IGHT    | 8IGHT - Set de cellules av et arr                           | Set scatola cambio ant. e post.: tutti i modelli 8IGHT         |
| TLR242015 | Motor Adapter, M4 Screw: 8E/8TE 3.0          | Motoradapter, M4-Schraube: 8E/8TE 3.0            | Adaptateur moteur à vis, M4 : 8E/8TE 3.0                    | Adattatore motore, vite M4: 8E/8TE 3.0                         |
| TLR243000 | Shock Stand-off Set (2): 8B 3.0              | Stoßdämpferabstandssatz (2): 8B 3.0              | 8B 3.0 - Entretoises d'amortisseurs (2)                     | Set distanziali ammortizzatori (2): 8B 3.0                     |
| TLR244000 | Front Susp Arm Set: 8B 3.0                   | Vorderer Aufhängungsarmsatz: 8B 3.0              | 8B 3.0 - Jeu de bras de suspension avant                    | Set braccio sospensione ant.: 8B 3.0                           |
| TLR244001 | Front Susp Arm Bush (4): 8B 3.0              | Vorderer Aufhängungsarmbuchse (4): 8B 3.0        | 8B 3.0 - Jeu de paliers de bras de suspension avant (4)     | Boccola braccio sospensione ant. (4): 8B 3.0                   |
| TLR244003 | Front Spindle Set: 8B 3.0                    | Hauptspindelsatz: 8B 3.0                         | 8B 3.0 - Jeu de fusées avant                                | Set fusello anteriore: 8B 3.0                                  |
| TLR244004 | FR Spndl Carrier, 15 Dgr: 8B 3.0             | Hauptspindelträger, 15 Dgr: 8B 3.0               | 8B 3.0 - Etrier porte fusée avant, 15°                      | Portafusello anteriore, 15 gradi: 8B 3.0                       |
| TLR244005 | Steer Rack St, BB, Shrt/Lg: 3.0              | Lenkgestängesatz, Kugellager, kurz/lang: 3.0     | 8B 3.0 - Renvois de direction, courts/longs avec roulements | Set cremagliera sterzo, cuscinetti a sfera, corta/ lunga: 3.0  |
| TLR244006 | Ackerman Shoulder Screw (2): 8IGHT Buggy 3.0 | Ackerman-Schulterschraube (2): 8IGHT Buggy 3.0   | 8B 3.0 - Vis épaulée de fixation de barre d'Ackerman (2)    | Vite a perno per barra Ackerman (2): 8IGHT Buggy 3.0           |
| TLR244007 | Hinge Pins, 4 x 21mm, TiCn (2): 8B 3.0       | Scharnierbolzen, 4 x 21 mm, TiCn (2): 8B 3.0     | 8B 3.0 - Axes en titane 4 x 21mm (2)                        | Perni, 4 x 21 mm, TiCn (2): 8B 3.0                             |
| TLR244008 | Rr Susp Arm St: 8B 3.0                       | Hinterer Aufhängungsarmsatz: 8B 3.0              | 8B 3.0 - Jeu de bras de suspension arrière                  | Set braccio sospensione posteriore: 8B 3.0                     |
| TLR244011 | Hinge Pin, 4 x 66mm, TiCn (2): 8B 3.0        | Scharnierbolzen, 4 x 66 mm, TiCn (2): 8B 3.0     | 8B 3.0 - Axes de suspension en Titane 4 x 66mm (2)          | Perno, 4 x 66 mm, TiCn (2): 8B 3.0                             |
| TLR244012 | Otr Hng Pins, 3,5, TiCn (2): 8B 3.0          | Äußere Scharnierbolzen, 3,5, TiCn (2): 8B 3.0    | 8B 3.0 - Axes de suspension extérieurs TiCn, 3,5mm (2)      | Perni esterni, 3,5, TiCn (2): 8B 3.0                           |
| TLR244015 | Rear Shock Tower: 8E 3.0                     | Hinterer Stoßdämpferbrücke: 8E 3.0               | 8E 3.0 - Support d'amortisseurs arrière                     | Torre ammortizzatore posteriore: 8E 3.0                        |
| TLR244025 | Front Shock Tower: 8IGHT Buggy 4.0           | Vordere Stoßdämpferbrücke: 8IGHT Buggy 4.0       | 8B 4.0 - Support d'amortisseurs avant                       | Torre ammortizzatore ant.: 8IGHT Buggy 4.0                     |
| TLR245000 | Droop Screw (4): 8B 3.0                      | Droop-Schrauben (4): 8B 3.0                      | 8B 3.0 - Vis de butée de suspension (4)                     | Vite del droop (4): 8B 3.0                                     |
| TLR245001 | 5-40 x 1/4" FH Screws (10)                   | 5-40 x 1/4" Flachkopfschrauben (10)              | Vis FHC 5-40 x 1/4" (10)                                    | Viti a testa piatta 5-40 x 1/4" (10)                           |
| TLR245003 | M4 x 8 Socket Head Screws (10)               | M4 x 8 Innensechskantschrauben (10)              | Vis à pans creux M4 x 8 (10)                                | Vite a brugola M4 x 8 (10)                                     |
| TLR342002 | Rear Dogbone & Axle Set: 8B 3.0              | Hinterer Dogbone und Achsensatz: 8B 3.0          | 8B 3.0 - Cardans et axes arrière (2)                        | Set cardano e asse posteriore: 8B 3.0                          |
| TLR44001  | 1/8 BX Dish Whl, Wht (4): 8B 3.0             | 1/8 BX Tellerscheibe, weiß (4): 8B 3.0           | 8B 3.0 - Jantes pleines Buggy, blanches (4)                 | Cerchione ruota BX 1/8, bianco (4): 8B 3.0                     |
| TLR5930   | Cap Head Screws, M3 x 8 mm (10)              | Kopfschrauben, M3 x 8 mm (10)                    | Vis BTR M3 x 8 mm (10)                                      | Viti a testa cilindrica con esagono incassato, M3 x 8 mm (10)  |
| TLR5933   | Cap Head Screws, M3 x 12 mm (10)             | Kopfschrauben, M3 x 12 mm (10)                   | Vis BTR M3 x 12 mm (10)                                     | Viti a testa cilindrica con esagono incassato, M3 x 12 mm (10) |
| TLR6019   | Ballstud/Hub Spacer St, Alum: 22             | Kugelbolzen/Nabendistanzstücksatz, Aluminium: 22 | 22 - Rotules à visser et entretoises alu                    | Set distanziali per perno uniball/mozzo, alluminio: 22         |
| TLR6352   | Washers, M3 (10)                             | Unterlegscheiben, M3 (10)                        | Rondelles M3 (10)   | Rondelle, M3 (10)  |
| TLR8202   | Body Clips, Black (12): 22                   | Karosserieklemmen, schwarz (12): 22              | 22 - Clips de carrosserie noirs (12)                        | Clip carrozzeria, nero (12): 22                                |

**RECOMMENDED PARTS | EMPFOHLENE TEILE | PIÈCES RECOMMANDÉES | PEZZI CONSIGLIATI**

| Part #    | English                                      | Deutsch  | Français  | Italiano   |
|-----------|--|--|---|--|
| LOSA99172 | Camber Gauge                                 | Sturzmessgerät   | Rapporteur de carrossage                          | Strumento regolazione campanatura                          |
| LOSA99173 | Ride Height Gauge                            | Fahrhöhe-Messgerät   | Rapporteur de garde au sol                        | Misuratore altezza da terra                                |
| LOSA99174 | Car Stand: 8IGHT/T                           | Fahrzeugständer: 8IGHT/T                                     | 8IGHT/T - Banc de stand                           | Supporto automodello: 8IGHT/T                              |
| LOSA99176 | Precision Tire Balancer w/Clay               | Präzisions-Radausgleichsregler mit Lehm                      | Equilibreur de pneus avec de la pate              | Bilanciatore gomme con plastilina modellabile              |
| LOSB4604  | 17 mm Whl Wrench Anod Alum: LST2, MUG, 8B/8T | 17 mm Radschraubenschlüssel Anod Aluminium: LST2, MUG, 8B/8T | LST2, MUG, 8B/8T - Clé à manche 17mm Anodisé Alum | Chiave ruote 17 mm, alluminio anodizzato: LST2, MUG, 8B/8T |
| TLR77000  | High-Pressure Blk Grease, 8cc                | Loses Hochdruckfett, 8 cc                                    | Graisse noire haute pression, 8cc                 | Grasso sfuso alta pressione, 8 cc                          |
| TLR77001  | Great Grease, 8cc                            | Great Grease, 8 cc   | Graisse adhésive, 8cc                             | Great Grease, 8 cc   |
| TLR77002  | Shock O-ring Grease, 8cc                     | Stoßdämpfer O-Ring Fett, 8 cc                                | Graisse pour joint torique d'amortisseurs, 8cc    | Grasso o-ring ammortizzatori, 8 cc                         |
| TLR99014  | TLR Foam Pit Mat                             | TLR Schaumstoffmatte   | Tapis de stand en mousse TLR                      | Tappetino spugna TLR                                       |
| TLR99101  | Shock Shaft Pliers                           | Stoßdämpferwelle Zange                                       | Pince pour tige d'amortisseur                     | Pinze albero ammortizzatore                                |
| TLR99102  | Turnbuckle Wrench, 22, 8B/8T                 | Spannschloss Schraubenschlüssel, 22, 8B/8T                   | 22, 8B/8T - Clé à biellettes                      | Chiave tiranti filettati, 22, 8B/8T                        |

# OPTIONAL PARTS | OPTIONALE BAUTEILE | PIÈCES OPTIONNELLES | PEZZI OPZIONALI

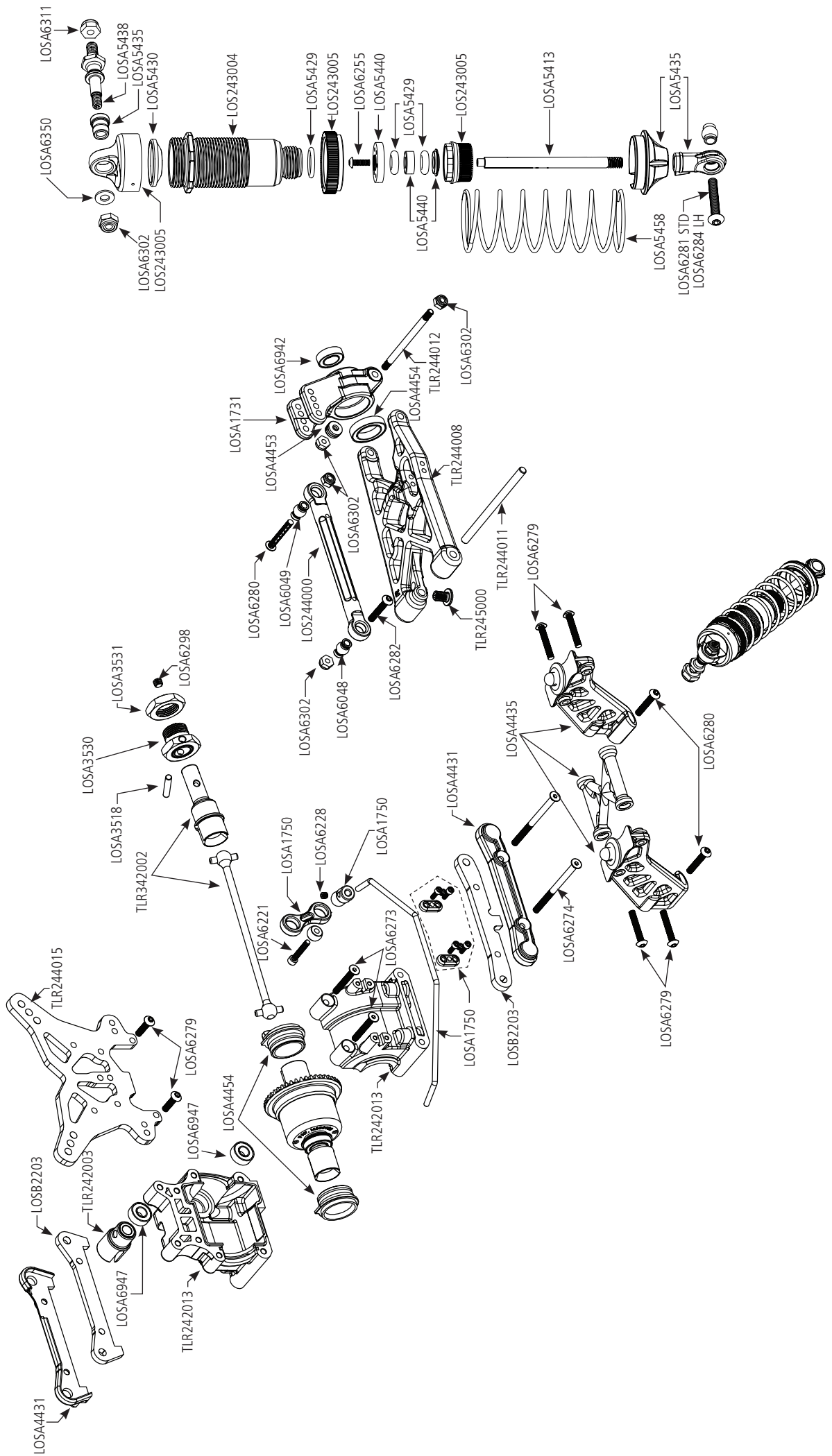
| Part #    | English  | Deutsch  | Français   | Italiano  |
|-----------|--|--|--|---|
| DYN8264   | SpeedTreads Robber 1/8 Buggy Tires, Mounted (2)        | SpeedTreads Robber 1/8 Buggy Räder, befestigt (2)        | Pneus Speedtreads Robber Buggy 1/8 montés sur jantes (2)           | Pneumatici buggy SpeedTreads Robber 1/8, montati (2)        |
| DYN8269   | SpeedTreads RoadRunner 1/8 Buggy Tires, Mounted (2)    | SpeedTreads RoadRunner 1/8 Buggy Räder, befestigt (2)    | Speed Treads - Pneus Buggy 1/8 RoadRunner montés sur jantes (2)    | Pneumatici buggy SpeedTreads RoadRunner 1/8, montati (2)    |
| DYN8267   | SpeedTreads Double Barrel 1/8 Buggy Tires, Mounted (2) | SpeedTreads Double Barrel 1/8 Buggy Räder, befestigt (2) | Speed Treads - Pneus Buggy 1/8 Double Barrel montés sur jantes (2) | Pneumatici buggy SpeedTreads Double Barrel 1/8, montati (2) |
| DYN8268   | SpeedTreads Trigger 1/8 Buggy Tires, Mounted (2)       | SpeedTreads Trigger 1/8 Buggy Räder, befestigt (2)       | Speed Treads - Pneus Buggy 1/8 Trigger montés sur jantes (2)       | Pneumatici buggy SpeedTreads Trigger 1/8, montati (2)       |
| DYNW0001  | SpeedTreads II Fullwick 1/8 Buggy Tires, Mounted (2)   | SpeedTreads II Fullwick 1/8 Buggy Räder, befestigt (2)   | Pneus Speedtreads II Fullwick pour Buggy 1/8 montés (2)            | Pneumatici buggy SpeedTreads II Fullwick 1/8, montati (2)   |
| DYNW0002  | SpeedTreads II Gription, 1/8 Buggy Tires, Mounted (2)  | SpeedTreads II Gription, 1/8 Buggy Räder, befestigt (2)  | Pneus Speedtreads II Gription pour Buggy 1/8 montés (2)            | Pneumatici buggy SpeedTreads II Gription, 1/8, montati (2)  |
| DYNW0003  | SpeedTreads II Dirtsmith, 1/8 Buggy Tires, Mounted (2) | SpeedTreads II Dirtsmith, 1/8 Buggy Räder, befestigt (2) | Pneus Speedtreads II Dirtsmith pour Buggy 1/8 montés (2)           | Pneumatici buggy SpeedTreads II Dirtsmith, 1/8, montati (2) |
| DYNW0004  | SpeedTreads II Dirtrage, 1/8 Buggy Tires, Mounted (2)  | SpeedTreads II Dirtrage, 1/8 Buggy Räder, befestigt (2)  | Pneus Speedtreads II Dirtrage pour Buggy 1/8 montés (2)            | Pneumatici buggy SpeedTreads II Dirtrage, 1/8, montati (2)  |
| LOSA1754  | Adj Fr Hinge Pin Brace/Inserts: 8B/8T                  | Vordere Einpass-Scharnierbolzenstrebe/Einsätze: 8B/8T    | 8B/8T - Support d'axes avant réglable avec mousses                 | Piastrine anteriori regolabili con inserti: 8B/8T           |
| LOSA3532  | Wheel Hexes (4) + 2mm Wider: 8B/8T*                    | Radsechskante (4) + 2 mm breiter: 8B/8T*                 | 8B/8T* - Hexagone de jantes (4) + 2mm                              | Esagoni ruote (4) larghi + 2 mm: 8B/8T*                     |
| LOSA3571  | 1.0 Module Pitch Pinion, 11T: 8E/SCTE                  | 1.0 Modul Zahnritzel, 11T: 8E/SCTE                       | 8E/SCTE - Pignon module 1.0, 11T                                   | Pignone a passo modulare 1.0, 11 denti: 8E/SCTE             |
| LOSA3572  | 1.0 Module Pitch Pinion, 12T: 8E/SCTE                  | 1.0 Modul Zahnritzel, 12T: 8E/SCTE                       | 8E/SCTE - Pignon module 1.0, 12T                                   | Pignone a passo modulare 1.0, 12 denti: 8E/SCTE             |
| LOSA3573  | 1.0 Module Pitch Pinion, 13T: 8E/SCTE                  | 1.0 Modul Zahnritzel, 13T: 8E/SCTE                       | 8E/SCTE - Pignon module 1.0, 13T                                   | Pignone a passo modulare 1.0, 13 denti: 8E/SCTE             |
| LOSA3574  | 1.0 Module Pitch Pinion, 14T: 8E/SCTE                  | 1.0 Modul Zahnritzel, 14T: 8E/SCTE                       | 8E/SCTE - Pignon module 1.0, 14T                                   | Pignone a passo modulare 1.0, 14 denti: 8E/SCTE             |
| LOSA3575  | 1.0 Module Pitch Pinion, 15T: 8E/SCTE                  | 1.0 Modul Zahnritzel, 15T: 8E/SCTE                       | 8E/SCTE - Pignon module 1.0, 15T                                   | Pignone a passo modulare 1.0, 15 denti: 8E/SCTE             |
| LOSA3576  | 1.0 Module Pitch Pinion, 16T: 8E/SCTE                  | 1.0 Modul Zahnritzel, 16T: 8E/SCTE                       | 8E/SCTE - Pignon module 1.0, 16T                                   | Pignone a passo modulare 1.0, 16 denti: 8E/SCTE             |
| LOSA3578  | 1.0 Module Pitch Pinion, 18T: 8E/SCTE                  | 1.0 Modul Zahnritzel, 18T: 8E/SCTE                       | 8E/SCTE - Pignon module 1.0, 18T                                   | Pignone a passo modulare 1.0, 18 denti: 8E/SCTE             |
| LOSA4440  | Front Top Brace, Aluminum: 8B/8T                       | Vordere, obere Strebe, Aluminium: 8B/8T                  | 8B/8T - Entretoise sup. av., alu                                   | Montante superiore anteriore, alluminio: 8B/8T              |
| LOSA4454  | R Gearbox Bearing Inserts, Alum                        | Heckgetriebe Lagereinsätze, Aluminium                    | Bague de roulement de diff arr., alu                               | Inserti cuscinetti posteriori scatola del cambio, alluminio |
| LOSA8130  | 8IGHT Wing, Black: 8B/8T                               | 8IGHT Flügel, schwarz: 8B/8T                             | 8B/8T - Aileron 8IGHT, noir  | Alettone 8IGHT, nero: 8B/8T                                 |
| LOSA8132  | 1/8 Universal Wing Kit, Yellow                         | Universal Flügelsatz Maßstab 1:8, gelb                   | Kit Aileron Universel 1/8, jaune                                   | Kit alettone universale 1/8, giallo                         |
| LOSA99030 | Servo Arm, Aluminum: JR                                | Servoarm, Aluminium: JR                                  | Palonnier de servo, alu: JR  | Squadretta servo, alluminio: JR                             |
| LOSA99031 | Servo Arm, Aluminum: KO/AIR/SPM                        | Servoarm, Aluminium: KO/AIR/SPM                          | Palonnier de servo, alu: KO/AIR/SPM                                | Squadretta servo, alluminio: KO/AIR/SPM                     |
| LOSA99032 | Servo Arm, Aluminum: FUT                               | Servoarm, Aluminium: FUT                                 | Palonnier de servo, alu: FUT                                       | Squadretta servo, alluminio: FUT                            |
| LOSA99033 | Servo Arm, Aluminum: Hitec                             | Servoarm, Aluminium: Hitec                               | Palonnier de servo, alu: Hitec                                     | Squadretta servo, alluminio: Hitec                          |
| LOSA99040 | Metal Sx Arm Insert, 23 Spline, AIR (2)                | Metall Sx Armeinsatz, 23 Spline, AIR (2)                 | Insert 23s AIR pour bras de servo métal (2)                        | Inserto metallico squadretta servo, 23 scanalature, AIR (2) |
| LOSA99042 | Metal Sx Arm Insert, 24 Spline, HRC (2)                | Metall Sx Armeinsatz, 24 Spline, HRC (2)                 | Insert 24s HRC pour bras de servo métal (2)                        | Inserto metallico squadretta servo, 24 scanalature, HRC (2) |
| LOSA99043 | Metal Sx Arm Insert, 25 Spline, FUT (2)                | Metall Sx Armeinsatz, 25 Spline, FUT (2)                 | Insert 25s FUT pour bras de servo métal (2)                        | Inserto metallico squadretta servo, 25 scanalature, FUT (2) |
| TLR240001 | Wing, Black 8IGHT Buggy 3.0                            | Flügel, schwarz 8IGHT Buggy 3.0                          | 8B 3.0 - Aileron noir  | Alettone, nero, 8IGHT Buggy 3.0                             |
| TLR240003 | Wickerbill Set (2): 8IGHT Buggy 3.0                    | Wickerbill-Satz (2): 8IGHT Buggy 3.0                     | 8B 3.0 - Jeu de rajouts d'aileron (2)                              | Set wickerbill (2): 8IGHT Buggy 3.0                         |
| TLR240007 | Body Set, Clear: 8IGHT-E 4.0                           | Karosseriesatz, farblos: 8IGHT-E 4.0                     | 8IGHT-E 4.0 - Carrosserie, transparente                            | Set carrozzeria, trasparente: 8IGHT-E 4.0                   |
| TLR244028 | LRC Adj Rr Hinge Pin Brace St: 8/8T/4.0                | LCR hintere Einpass-Scharnierbolzenstrebensatz: 8/8T/4.0 | 8/8T/4.0 - Cale de pincement arrière LRC                           | Set piastrine regolabili posteriori LRC: 8/8T/4.0           |
| TLR342003 | ElctrcClchSystem: 8E/8TE/3.0/8E 4.0                    | Elektrisches Steuerungssystem: 8E/8TE/3.0/8E 4.0         | 8E/8TE/3.0/8E 4.0 - Kit d'embrayage pour électrique                | Frizione elettrica: 8E/8TE/3.0/8E 4.0                       |
| TLR344002 | Al Fr Spindle Set: 8/T/E/4.0                           | Al Hauptspindelsatz: 8/T/E/4.0                           | 8/T/E/4.0 - Set de fusées avant en aluminium                       | Set fusello anteriore, alluminio: 8/T/E/4.0                 |
| TLR344003 | Al Rr Hub Carrier St: 8/T/E/4.0                        | Al Heck-Nabenträgersatz: 8/T/E/4.0                       | 8/T/E/4.0 - Set d'étriers arrière en aluminium                     | Set portamozzo posteriore, alluminio: 8/T/E/4.0             |
| TLR44000  | 1/8 BX Dish Whl, Yel (4): 8B/3.0                       | 1/8 BX Tellerscheibe, gelb (4): 8B/3.0                   | 8B/3.0 - Jantes pleines Buggy, jaunes (4)                          | Cerchione ruota BX 1/8, giallo (4): 8B/3.0                  |















[WWW.LOSI.COM](http://WWW.LOSI.COM)

53339.1

Updated 09/2017 LOS04014

©2017 Horizon Hobby LLC.

Losi, 8IGHT-E, DSM, DSMR, Dynamite, Fuze, Reaction, Prophet, Precept, Speedpack, EC5, SpeedTreads and the Horizon Hobby logo are trademarks or registered trademarks of Horizon Hobby, LLC. The Spektrum trademark is used with permission of Bachmann Industries, Inc. All other trademarks, service marks and logos are property of their respective owners. Patents pending.